

Manual Probe Station MAPS 1

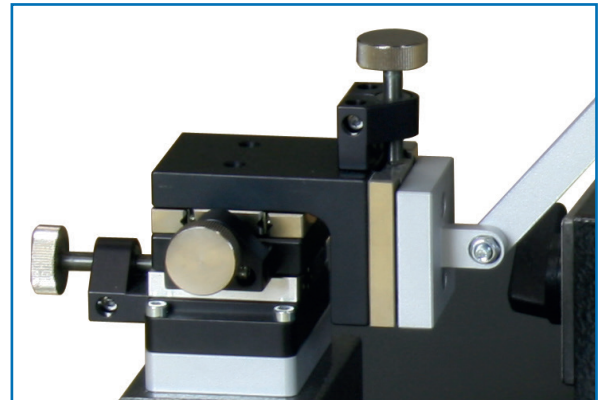
Flexible Probing of Large - Area Planar and 3D Structures

Probe stations have a longstanding history for contacting probes to semiconductor devices. However, at package and board level, very often engineers have relied on “home brew” test setups because professional manufactured solutions were not available or too expensive.

With the new **bsw Manual Probe Station MAPS 1** this has changed. The station is ideally suited for applications where you need to probe a PCB. It offers large open space to position the probes in any direction and angle and is ideally suited to measure e.g. Signal Integrity aspects on backplanes or Power Integrity on CPU boards. The **bsw Manual Probe Station MAPS 1** meets the needs of lab engineers who need precise measurement but do not have extensive budgets.

Precise Control - Measurement Accuracy

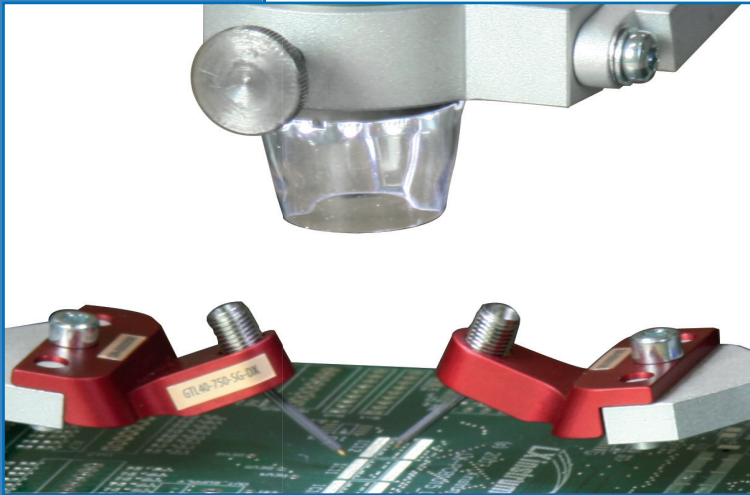
Positioners enable precise and smooth XYZ motion.



Test Setup in the twinkling of an eye!

The PS1 offers full control of both the working surface and probe positioning, providing great flexibility in contacting arbitrary located PCB structures. This allows fast, precise movement between test sites. Devices are quickly and easily mounted on the probe station through magnetic clamp-style board chucks. The large, flat stage working surface is extremely versatile. With only a few manual movements you can change between horizontal and vertical placement of the PCB.

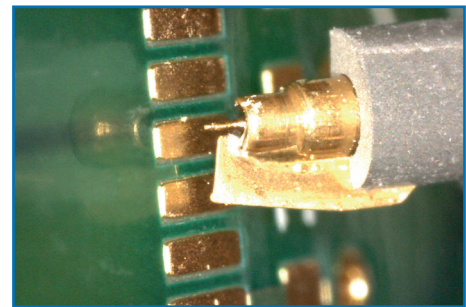
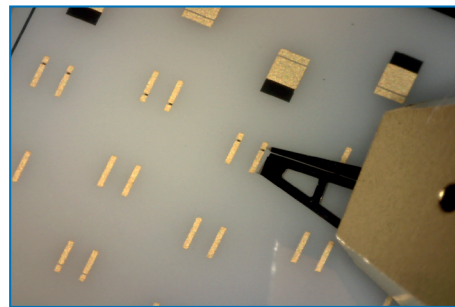
bsw Manual Probe Station MAPS 1 is a “turn-key” station that comes with all equipment needed to start probing and measuring. Our application expertise acquired through years of consulting activity has contributed to a flexible and ergonomic probe station for a wide variety of use cases at entry level price point. The growing range of optional accessory allows for further simplified interfacing to the DUT.



Features

The **bsw Manual Probe Station MAPS 1** combines fine positioner resolution and variable and precise measurement needs with today's budget constraints.

1. 50 x 50 cm working surface with magnetic flex-setup
2. ESD compliant
3. Multiple positioners for n-port, differential measurements accommodated
4. Positioners adapt to a variety of different probe styles (metric and inch)
5. Horizontal and vertical PCB mounting position supported
6. X-Y-Z positioning: 12.5 mm travel, resolution: 0.25 mm/turn
7. USB microscope and video system
8. Optional high-end double-eyed microscope with illuminator available



Quick Start Content

- PS1 probing stage with vibration absorbers and ESD kit
- USB microscope (90x magnification) and video system with free-motion holder and Windows software
- 2 – micrometer screw driven XYZ positioners for horizontal use
- PCB Mounting Kit
- USB microscope and video system including Windows software
- Cal substrate holder

Optional Accessory

- Stereo zoom microscope with Illuminator
- Micropositioner modification kits for vertical PCB use
- Upper PCB holder for vertical PCB's
- Probes for VNA based measurement
- VNA Connection Kits
- VNA

Germany:

bsw TestSystems & Consulting AG
 Waldenbucher Str. 42
 71065 Sindelfingen
 Germany
 Telephone + 49 (0)7031 / 41 00 89-28
 Telefax + 49 (0)7031 / 41 00 89-18
 info@bsw-ag.com

The Netherlands:

bsw TestSystems & Consulting bv
 Akkerdistel 2
 NL-5831 PJ Boxmeer
 The Netherlands
 Telephone +31 48 55 758-04
 Telefax +31 48 55 758-34
 info@bsw-bv.nl